



Best of Show  
ISC West 2006

Won by Capture Omniscope



Best New CCTV  
Product  
IFSEC 2005

Won by Vista Eclipse



Best Security Innovation  
Security Excellence Awards  
2005

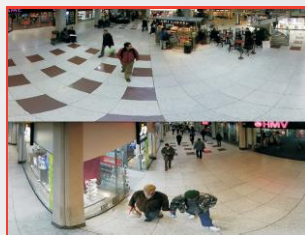
# grandeye

## 360° surveillance halocam pro analogue series



- Full situational awareness - 360° surveillance at 3 megapixels
- Retrospective scene analysis with recording accessory
- Video analytics in camera - perfect for unmanned installations
- Two analogue outputs with multiple geometrically correct virtual cameras (VCAMs)
- Seamless integration with standard cabling, controllers, DVRs
- Presets, tours, sectors and privacy zones all available in-camera

### 360° situational awareness



Halocam offers a choice of multi-view screens, an essential requirement for wide-angle surveillance. Each of the Halocam's two analogue outputs can be configured to give seven multi-view formats, comprised of combinations of panoramas and virtual cameras, all geometrically corrected to provide the most informative and comprehensive view of the scene at all times. VCAMS accept independent ePTZ control from industry-standard CCTV controllers, offering up to 7x optical zoom.

### 360° video analytics

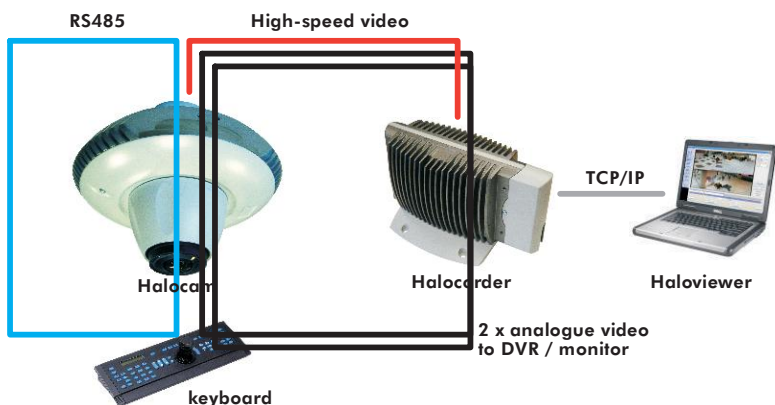
Most surveillance applications require monitoring a wide field of view. With built-in video analytics and advanced alarm generation in Halocam, such surveillance can be achieved without need of an operator.

Halocam, with its powerful, proprietary IMTERA visual processor, enables intelligent video analysis within the camera, including motion detection / tracking, laning, digital trip and scene analysis. Up to 75 definable motion detection regions are continually monitored and the motions of up to four individuals may be tracked simultaneously on Halocam VCAMs.



Scene analysis alerts operators to object removal, object introduction or object interference without false triggering by transient movement within the regions.

# retrospective 360° surveillance



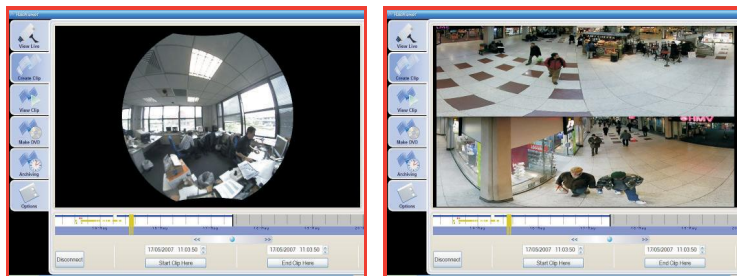
retrospective optical equivalent zoom is available. During playback, recording continues uninterrupted, ensuring that security is not compromised.

The Haloviewer Windows application enables PCs to connect to Halocorder over a standard TCP/IP network and carry out remote investigative and archival operations. An operator may select a Halocam for live viewing and recorded footage may be viewed, played back and downloaded from the Halocorder to the PC for offline viewing and archival. Standalone CD/DVDs can be effortlessly created which will run without any installation and enable investigating authorities to carry out the same ePTZ operations, using a PC and mouse as required, completely offline.

The Halocam-Halocorder combination offers a powerful investigation tool for after-the-fact analysis of the complete 360° field of view, independent of what the operator was viewing at the time. In playback mode, Halocorder facilitates going back in time to pan, tilt and zoom the camera as though present at the time of the event. All the Halocam features, including motion detection / tracking, multi-view display and ePTZ may be utilised to investigate events.

Halocorder captures the entire fisheye scene in high resolution at up to 4fps continuously, event-based or on a scheduled basis. A powerful expanding timeline simplifies investigation and up to 7x

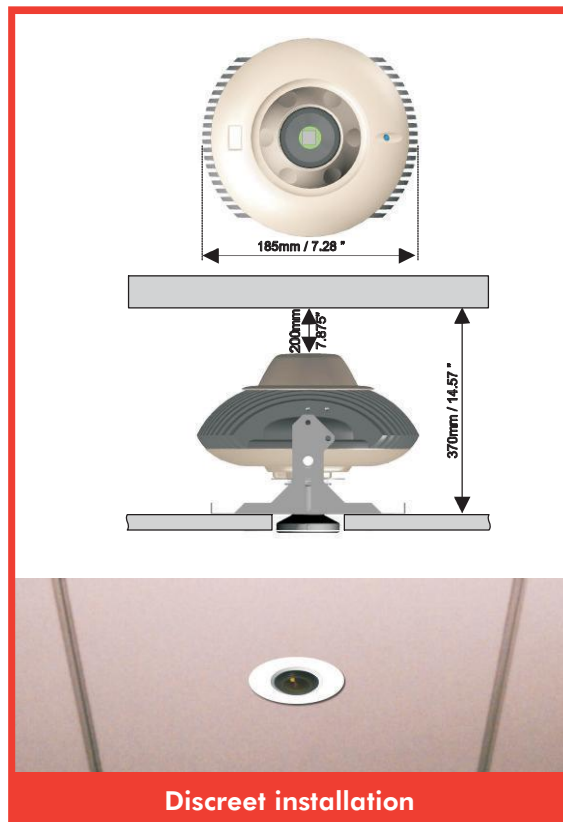
The Haloviewer SDK enables developers to integrate this powerful investigative tool into their own Windows applications running on DVRs and PCs.



Screen shots of Haloviewer

## specifications

Sensor resolution	3 megapixel (2048 x 1536)
Virtual cameras	4 fully independent PTZ - full resolution including thumbnail
Frame rate	~12 frames per second
Motion detection / tracking	Variable sensitivity. 75 regions of interest. 4-person simultaneous tracking. Digital lanning.
Museum mode	Detects object removal, addition and change
Presets	128
Tours	4 preset tours (64 steps each), 4 learn tours (3 minutes each)
Privacy zones	75. Pixel perfect
Sectors	75
Video output	2 x analogue 75 Ohm BNC coax, PAL / NTSC selectable
Control protocol	(Autosensing) RS485: Pelco-D, Vista PowerDome, Fastrax II. RS232: Bosch Autodome
Alarm inputs	4 normally open or normally closed contact inputs
Alarm output	1 momentary or transparent, 30W (max) - Amp (max) 10W (max)
Power supply (external)	11.5 - 16VDC; cable 18-14 AWG
Weight	1.5kg (3.3lbs)
Sensor responsivity	1.0V/Lux-sec (550nm)
Operating temp range	0 - 40°C (32 - 104°F)
Storage temp range	-10 - 60°C (14 - 140°F)
Lens - Fujinon	185° FOV, f-theta projection, 158° - 170° navigable by VCAMs
Processor	IMTERA 3D visual processor unit
Approvals	EMC CISPR Class A, FCC Class A, CE, UL2044 (UL2043 with conduit kit)



grandeye